



# Elan 45 Impression

## Operating Manual

AVAMAX Yachting & Property d.o.o.  
Otona Ivekovića 6/4, 10360 Sesvete (Grad Zagreb), Hrvatska/Croatia  
Phone: +43 677 61509590 eMail: [office@avamax-yachting.com](mailto:office@avamax-yachting.com)

---

<b>General Instructions .....</b>	<b>page 1</b>
<b>Boarding .....</b>	<b>page 2</b>
<b>Toilets .....</b>	<b>page 3</b>
<b>Shower and Sink .....</b>	<b>page 4</b>
<b>Kitchen .....</b>	<b>page 5</b>
<b>Kitchenware .....</b>	<b>page 6</b>
<b>Refrigerator .....</b>	<b>page 7</b>
<b>Skipper Table .....</b>	<b>page 8</b>
<b>Control Panel .....</b>	<b>page 9</b>
<b>Power Supply .....</b>	<b>page 10</b>
<b>Climate System .....</b>	<b>page 11</b>
<b>AC Cleaning .....</b>	<b>page 12</b>
<b>Emergency Tools .....</b>	<b>page 13</b>
<b>Batteries, USB, Light .....</b>	<b>page 14</b>
<b>Tank Water Pump .....</b>	<b>page 15</b>
<b>Fuses .....</b>	<b>page 16</b>
<b>Cockpit .....</b>	<b>page 17</b>
<b>Winches .....</b>	<b>page 18</b>
<b>Deck Devices .....</b>	<b>page 19</b>
<b>Gas Handle .....</b>	<b>page 20</b>
<b>Engine Control .....</b>	<b>page 21</b>
<b>Life Raft .....</b>	<b>page 22</b>
<b>Engine .....</b>	<b>page 23</b>
<b>Route Warning .....</b>	<b>page 24</b>
<b>Information .....</b>	<b>page 25</b>
<b>In Case of Accidents .....</b>	<b>page 26</b>
<b>Harbor Master Office .....</b>	<b>page 27</b>

# General Instructions

- 1** In strong winds over 27 knots do not leave the marina!
- 2** The engine must not be used above 2500 rpm.
- 3** Over 2500 rpm should only be used if you need to maneuver
- 4** The bow thruster must be used for not more than 5 seconds
- 5** When parking in reverse, look into the water to avoid getting caught on the mooring screw.
- 6** Also, when parking in reverse, beware of underwater rocks that can damage the steering wheel.
- 7** When raising the anchor, move at a low speed of 0,3 forward in the direction of the chain. This will make the work of the anchor easier and will avoid knocking out the fuse.
- 8** When you leave the boat, it is recommended to raise the platform because the wind can change, and the platform might hit the pier.
- 9** If the anchor is caught on the bottom, do not try to pull it only upwards, otherwise you might only pull out the chain, and the anchor may remain on the sea bottom.
- 10** To lift an anchor that has become caught, you need to let out the chain again, then turn the yacht at a different angle and try to pull out the anchor again.
- 11** When starting the engine at idle speed, increase its speed to 3500 for a couple of seconds and check during this time whether water comes out of the exhaust pipe.
- 12** Do not anchor in the wrong place. When spending the night at the anchor, check the weather at night. Will your bay be protected?
- 13** It is better to give way to everyone, perhaps the other boat did not notice you. This will avoid accidents.
- 14** When anchoring, make sure your chain is not on someone else's. Anchors should be dropped to 4 depths.
- 15** Do not forget to adjust the backstay! On a full course you might need to tighten it a little, and on a sharp course you need to release.

# Boarding

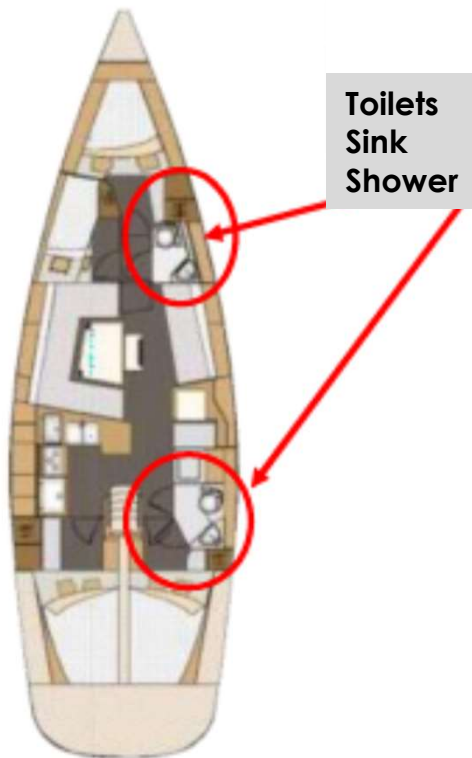
This is the ELAN 45.1 yacht named „KHALEESI“, a high-class 45 feet/14 meter sailing yacht that, in contrast to other competitive concepts, offers a more original and true sailing experience. The yacht is equipped with high-quality technology and the latest electronics, which are intended to make the crew's stay and operation of the yacht as comfortable as possible. The skipper is obliged to read and follow these technical instructions as well as to train the crew according the manual to avoid awkward situations or breakdowns.



As soon as you are on board of the yacht, first of all locate and check all the fire extinguishers, fire blankets and life jackets. Always remember their locations! In the event of an unexpected emergency this information could save your life.



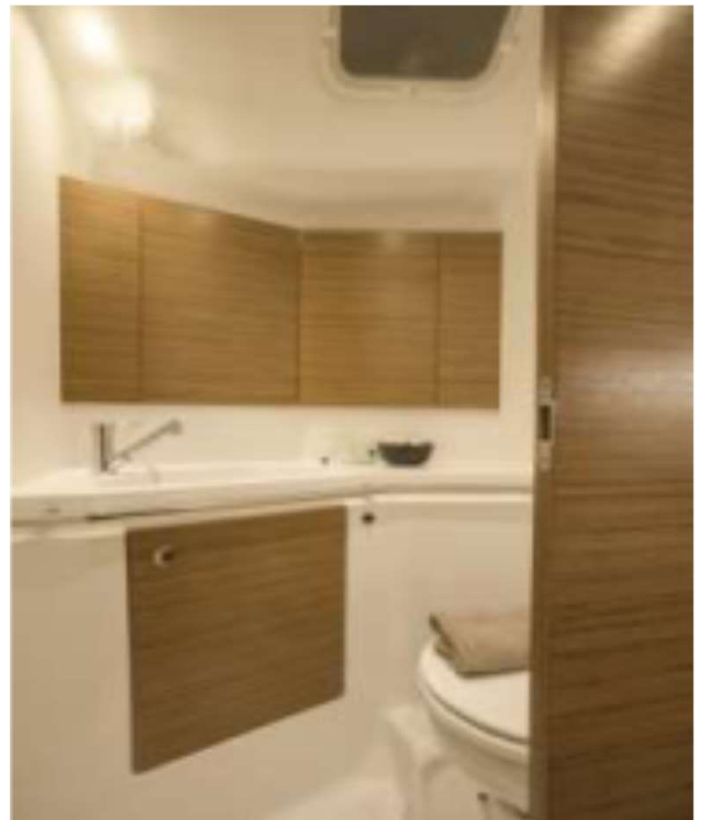
# Toilets



When boarding, the first thing after checking the fire protection is to pay attention to the toilets. The toilet flushing works electric and is done by simply pressing the black button. It is strongly recommended to fill the toilet with a little water before using it. This will make the flush easier and avoid clogging. Afterwards it is recommended to flush the toilet 2-3 times to avoid bad smells.

## ATTENTION!

Paper, personal hygiene items and other products must never be thrown into the toilet, as they could completely block the pipes! This would need a complete disassembling of the whole toilet, waste tank and pipe structure.



It is recommended to keep the tank open when moving at the sea. The tank valve is located under the washbasin. In appearance, it is the largest valve.



# Shower and Sink

There is hot and cold water in the shower and in the tap.



If you cannot pull out the shower hose, it may be caught inside. Do not pull harder! You need to open the drawer under the sink and adjust the hose.



Drain

After showering, there remains water in the bottom tub. Turn on the pump to flush. The button to operate the pump is located near the sink.

If the drain in the shower does not work, lift the drain cover and make sure that there is no dirt blocking the drain.

# Kitchen

The galley and dining area is the most spacious room on the lower deck. It easily accommodates three persons for cooking and the entire crew for dinner. The kitchen is equipped with everything necessary for everyday life.



The stove is suspended on hooks which allow it to swing in accordance with the wave, maintaining a position parallel to the horizon and the soup in the pot. If necessary, it can be fixed in the normal position.

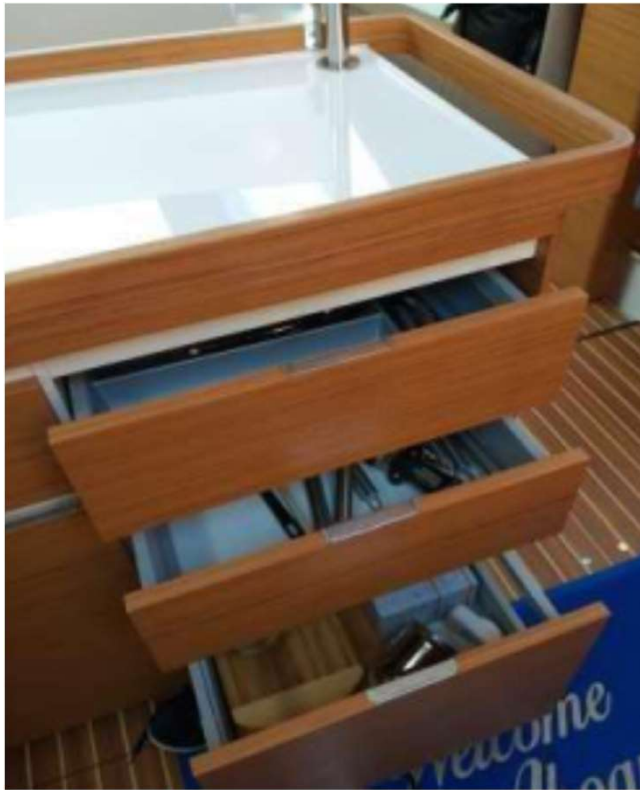
There is also a microwave oven on the yacht. It can only be used with power from the shore or a power generator.

## Washing

The kitchen has one built-in sink. Like the stove, it is covered with a lid from the counter-top. The kitchen tap is standard. Do not wash away dirt (for example from coffee), as the system may become clogged.



# Kitchenware



When the yacht is under sail, all the kitchenware and other objects in the kitchen must be secured. Pots, dishes, cutlery and other kitchenware are hidden in drawers. Each drawer is equipped with a handle and a lock.

To secure the drawers you need to slam it shut. A special mechanism will prevent the drawer from opening.



Drawer opening mechanism



# Refrigerator



On the yacht there is a freezer in addition to the refrigerator.

It opens by lifting the lid with the ring.

The valve for closing the gas supply is located under the stove.



# Skipper Table



The table contains controls for the yacht energy system, communication and navigation.

Main switches on board inverter (it is hidden and only the socket is outside)

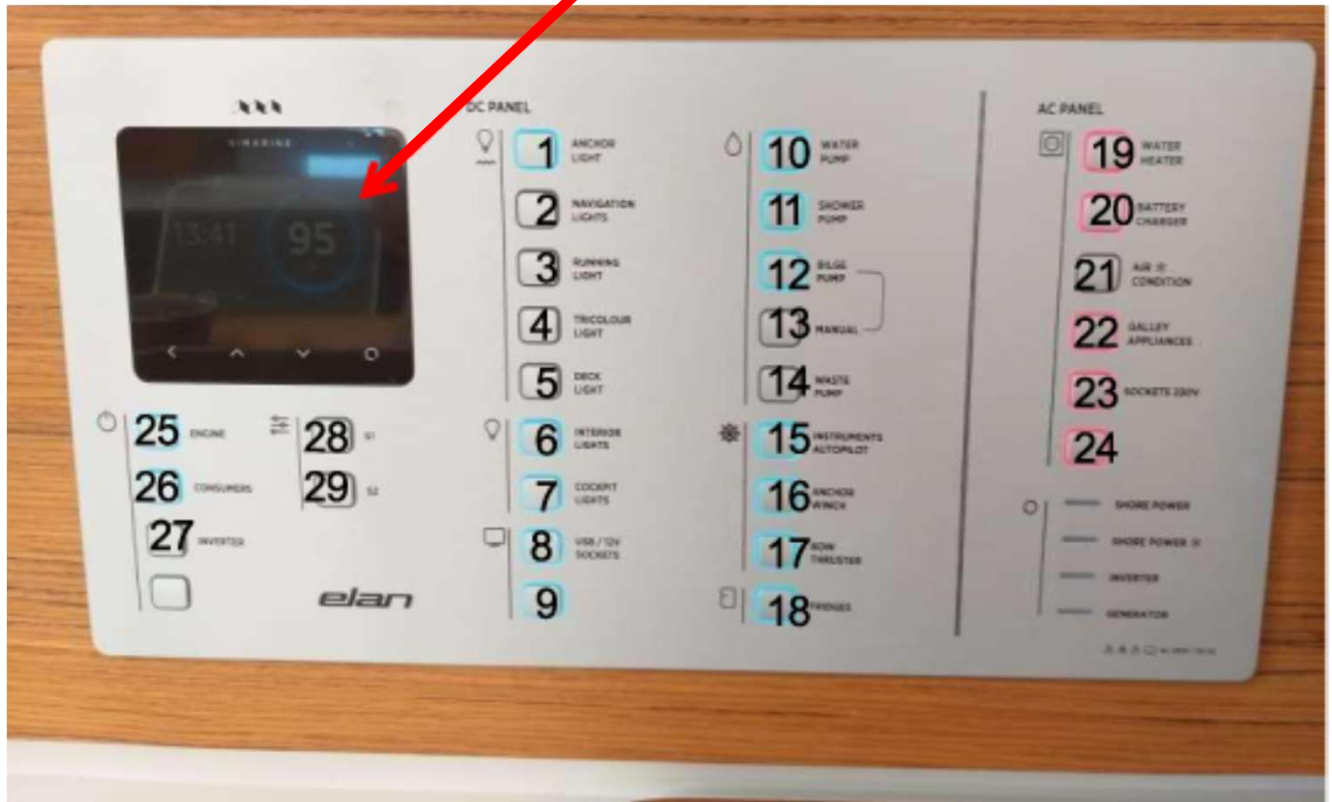


If the WiFi does not work you need to

- 1) make sure that the problem is caused by the network and not other reasons
- 2) make sure the switch 9 (WiFi) is on
- 3) if everything is on, then turn off switch (WiFi) for a couple of minutes and turn it back on
- 4) After a few minutes the network will appear

# Control Panel

Tank and battery level sensor



- 1 Anchor lights
- 2 Navigation light
- 3 Daytime running lights
- 4 Top tri-color lights
- 5 Deck lighting
- 6 Interior lighting
- 7 Cabin lighting
- 8 USB/12V Sockets
- 9 WiFi

- 10 Water pump
- 11 Shower pump
- 12 Bilge pum (automatic)
- 13 Bilge pump (forced)
- 14 Toilet waste pump
- 15 Autopilot
- 16 Anchor winch
- 17 Bow thruster
- 18 Refrigerator

- 19 Water boiler
- 20 Battery Charger
- 21 Air-condition
- 22 Galley appliances
- 23 Sockets
- 24 Empty button
- 25 Engine
- 26 Compass
- 27 Inverter



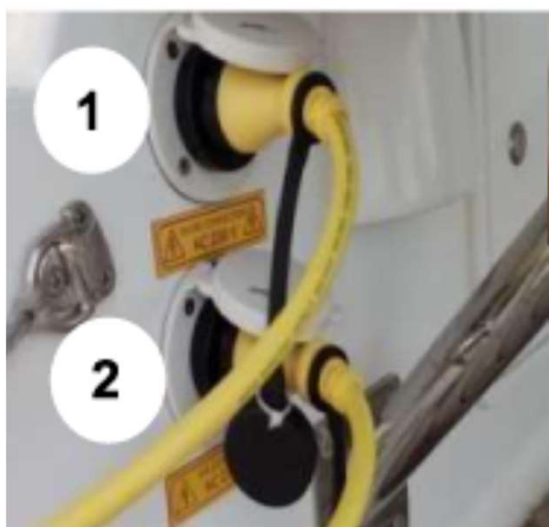
# Power Supply



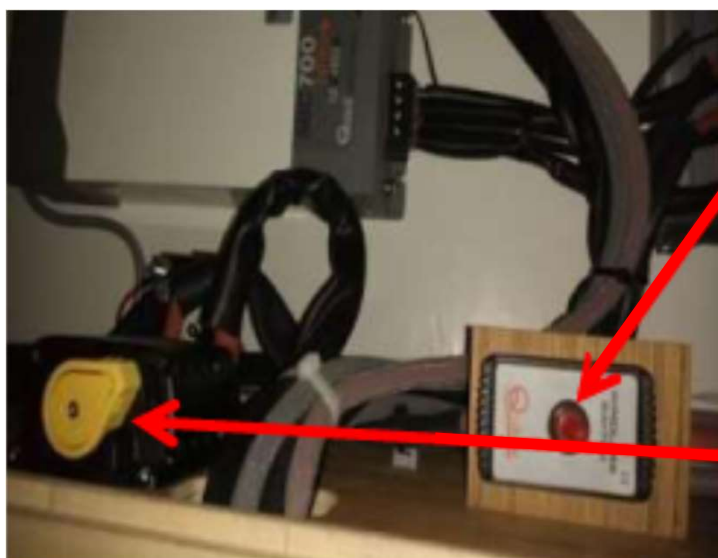
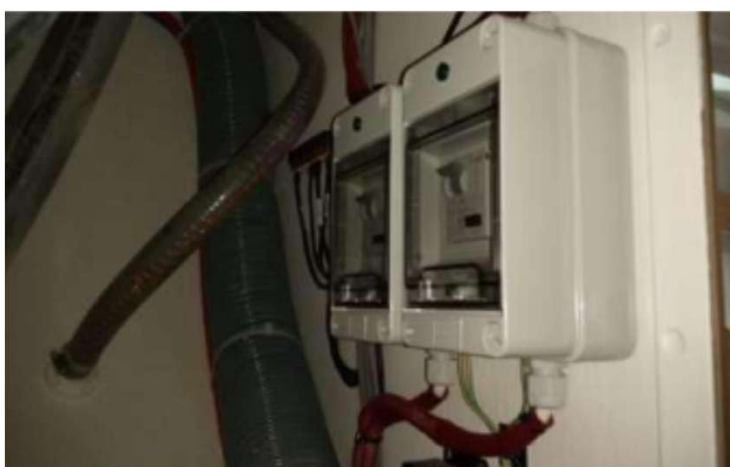
① Power supply 220 V for the entire yacht



If there is no electricity on the yacht, check if the power distributor on the shore is on. If so, then check the two circuit breakers in the left cabin behind the panel.



② Power supply for the climate system



If the anchor winch does not work, make sure the circuit breaker has not tripped. It is located in the forward cabin under the mattress in the outermost drawer.

Manual battery switch



**It is prohibited to place bags, packages or any other things near this window! There is a grille of the climate system under the window. If it is blocked, the climate system might not work or be damaged.**



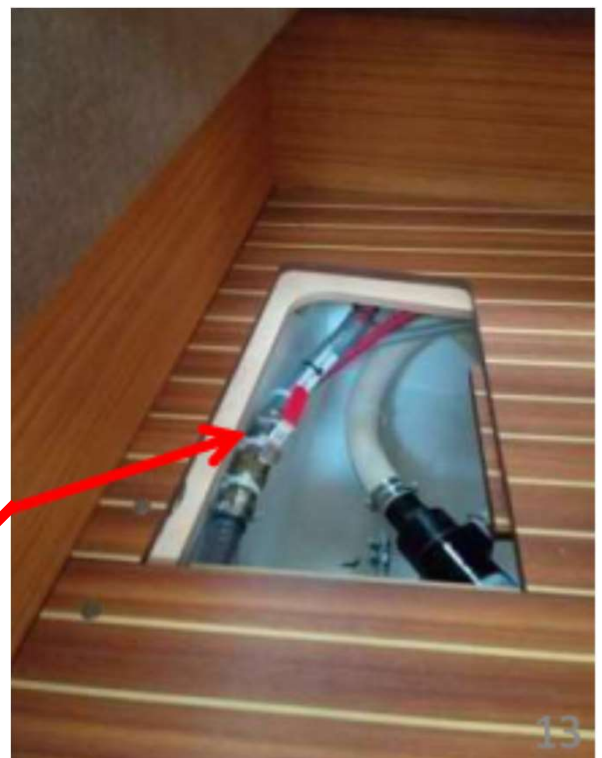
# AC Cleaning



If the air conditioning system is faulty, it is recommended to open the subfloor near the label as shown in the photo above. If the filter is dirty, the interior will not be visible through the glass.

In this case

- 1) close the valve
- 2) open the lid
- 3) clean
- 4) close the lid
- 5) turn the tap



Valve for closing/opening water supply

13

# Emergency Tools



Under the skipper's seat, there is a box. In this box you find

- |                  |                      |                     |
|------------------|----------------------|---------------------|
| 1) First aid kit | 5) Fire extinguisher | 9) Rescue rockets   |
| 2) Foghorn       | 6) Tools             | 10) Straps          |
| 3) Binoculars    | 7) Compass           | 11) Thermal blanket |
| 4) Spotlight     | 8) Winch handles     | 12) Waterproof bag  |

In this box you find a blanket that you need to extinguish light fires and also fires on the kitchen stove or spilled flammable liquids on it.

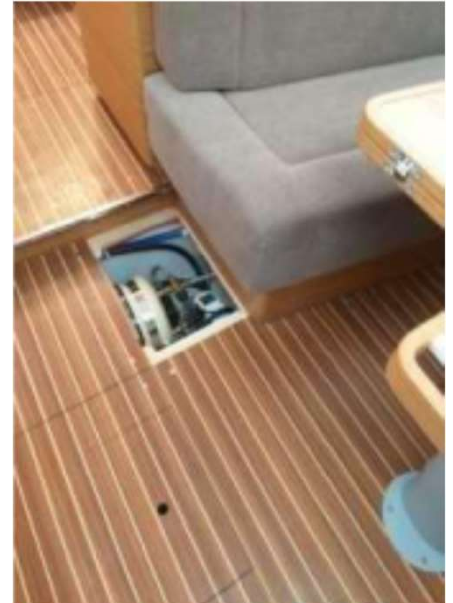
Always be vigilant and careful!



# Batteries, USB, Light



The batteries on the yacht are designed for approximately one day of autonomous operation. To charge the battery, you need to connect to shore power or start the engine for 1-2 hours.



Right stern cabin

Bow cabin

Left stern cabin



All cabins are equipped with lockable closets, and light.



# Tank Water Pump



Tap switching  
water tank

Water  
pump for  
tank  
water  
supply



Bleed  
bolt to  
ventilate  
air from  
the  
system

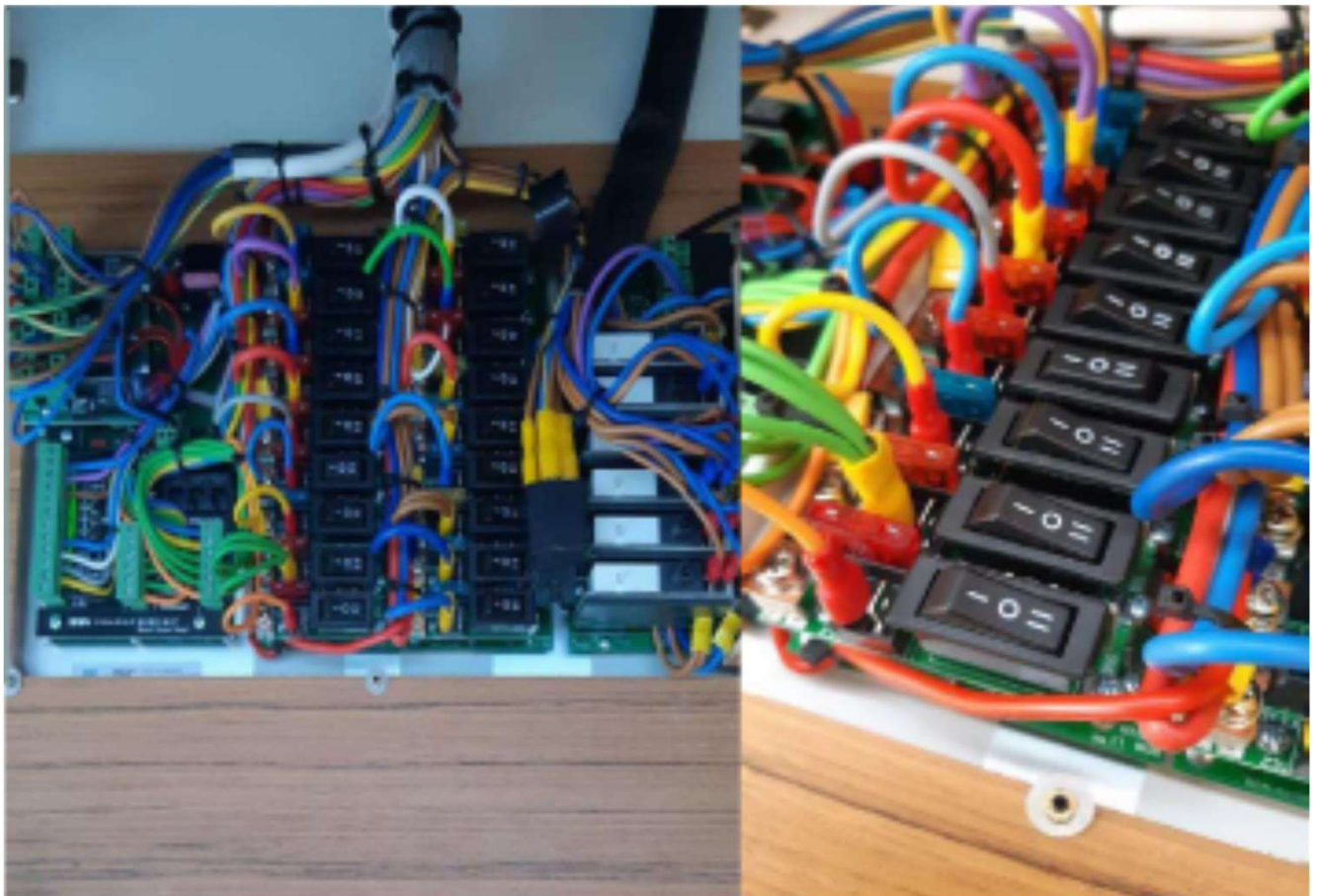
When switching water tanks, the system may become air-locked. How to determine this:

- 1) Lift the tap ①. The pump hums, but the water does not come out.
- 2) Switch the tap ① to the tank that contains water.
- 3) Open the closet under the sink and ventilate the air using the bolt ② by unscrewing it a little. Continue until all the air has left the system.

# Fuses



When a fuse blows, a red indicator light around the button with the instrument's name on the instrument panel will illuminate.



Open the navigation panel, find the blown fuse and replace it with a new one. New fuses are also behind the panel.





In the forward cabin under the mattress, there is a bow thruster. Do not put anything on it! The fuse for the bow thruster is there too.

Autopilot

Waterproof charger

Multifunctional GPS B&G

Multifunctional display showing wind strength and direction, depth, speed

Music control via GPS (FUSION Bluetooth)



Horn

## Bow thruster

Turns on by holding two buttons (1 and 2). Turns off automatically after 5 minutes of waiting or by pressing button 3.

Button 1: bow to the left

Button 2: bow to the right

Button 3: Power off

Do not operate the bow thruster for more than 5 seconds! This might blow the fuse.

# Winches



This type of winch can operate both manually and automatically. In case of manual operation, it is needed to insert the handle and turn the winch by hand.

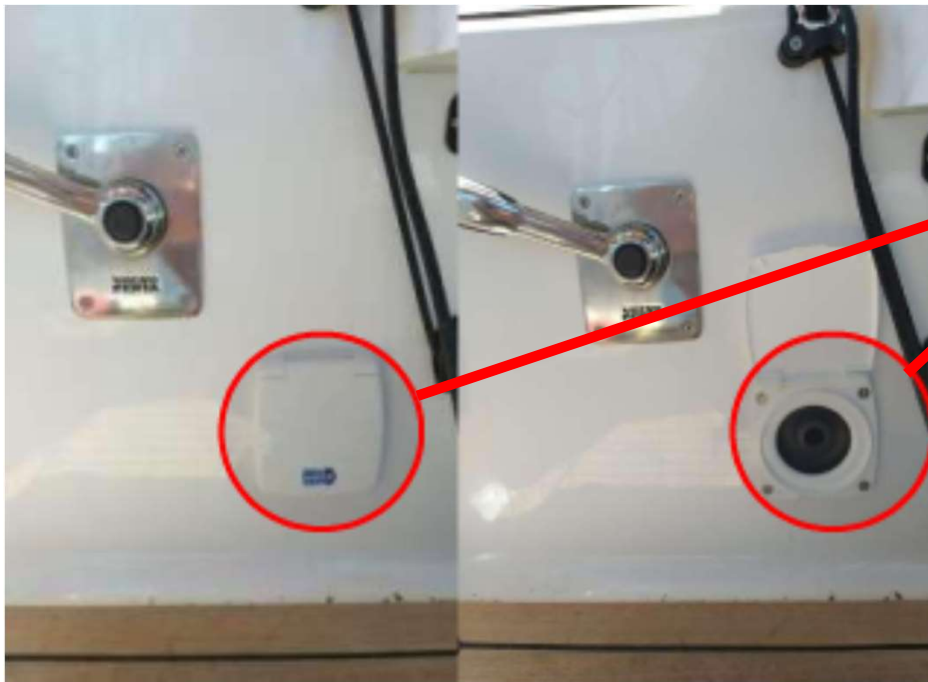


In case of automatic operation, the winch can be controlled by using two buttons.

Button 1: the winch rotates slowly

Button 2: The winch rotates faster

# Deck Devices



Manual bilge pump for pumping out water of the boat

The anchor locker contains a galvanized chain and an anchor winch. The chain is tied. But do not give away the whole chain when anchoring. Leave a little extra length. The whole chain length is 60 meters.



Stern shower – cold and hot water



Anchor winch control buttons

# Gas Handle



To move forward, smoothly push the handle towards the bow (the driving direction). To move backward, smoothly push the throttle towards the stern. All movements must be smooth!

Always watch the rotations per minute of the motor. They should not exceed the 2.500 mark.

To check the engine speed and exhaust system, move the throttle to the neutral position (in the middle). Then press button ① and start slowly increasing the speed. This enables to check the engine performance without rotating the propeller.

To fold the propeller when sailing, turn the throttle to the reverse position with the engine off. Then the propeller will fold. Do not forget to move the throttle to neutral before starting the engine.



# Engine Control

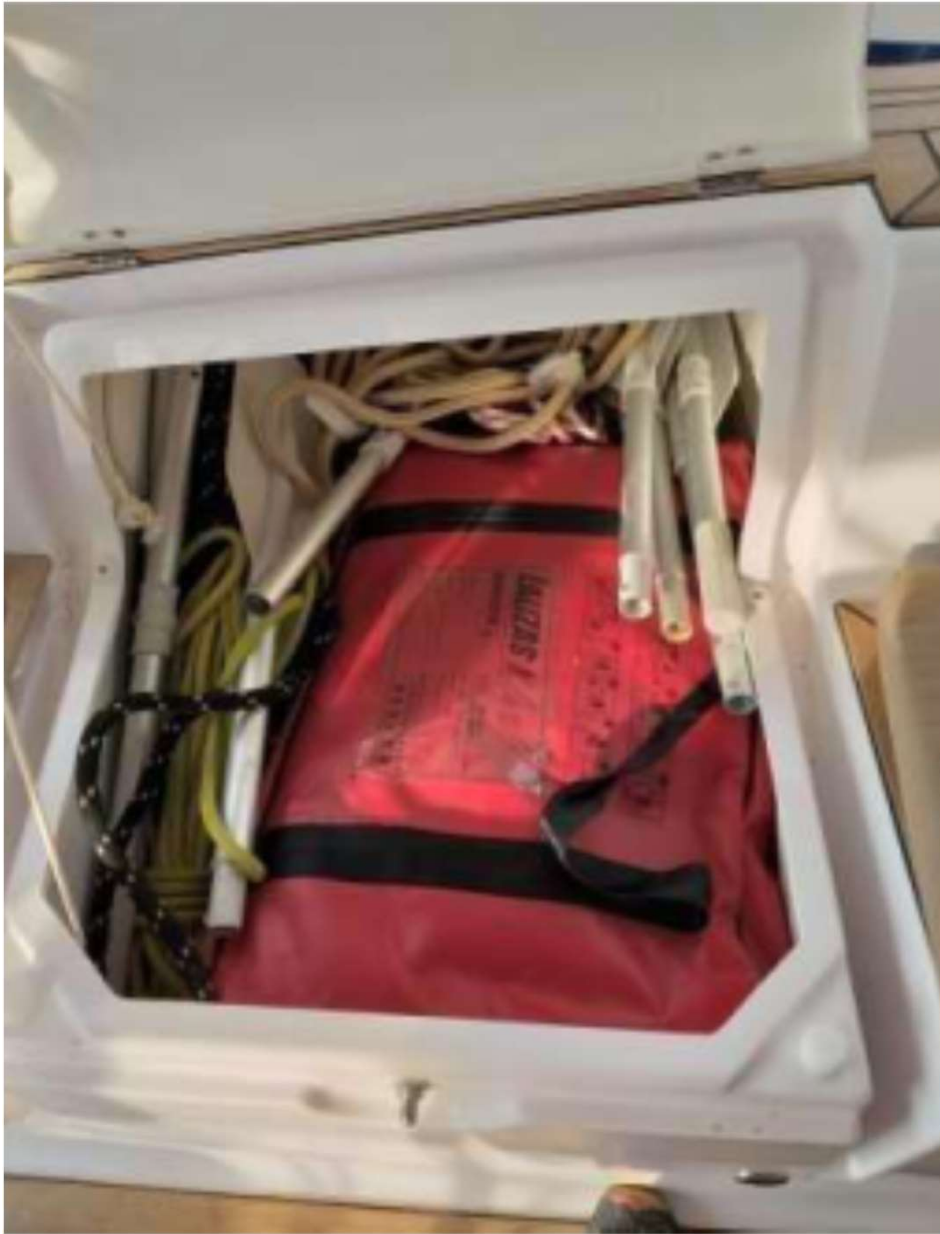


Engine start/stop control unit

Tachometer

Throttle grip





**A life raft (for 10 persons) must always be on the yacht! Always check its availability. In an emergency, it can save your life.**

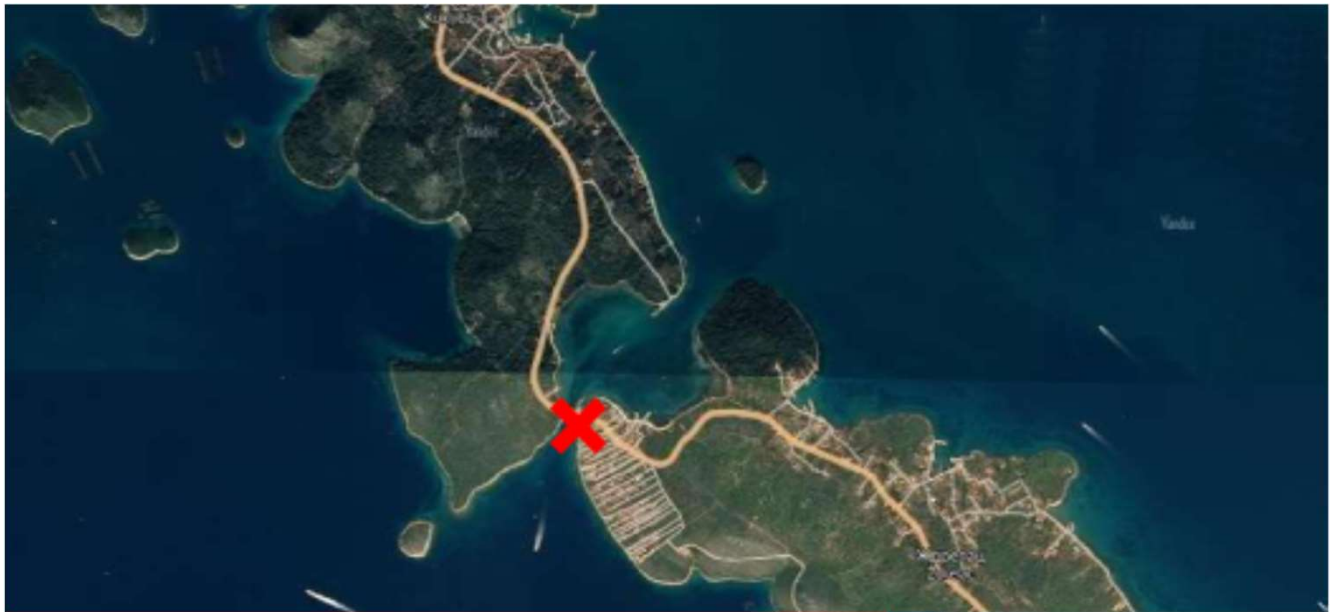


**Engine coolant. Do not forget to check the fluid of the engine coolant system before leaving the marina.**

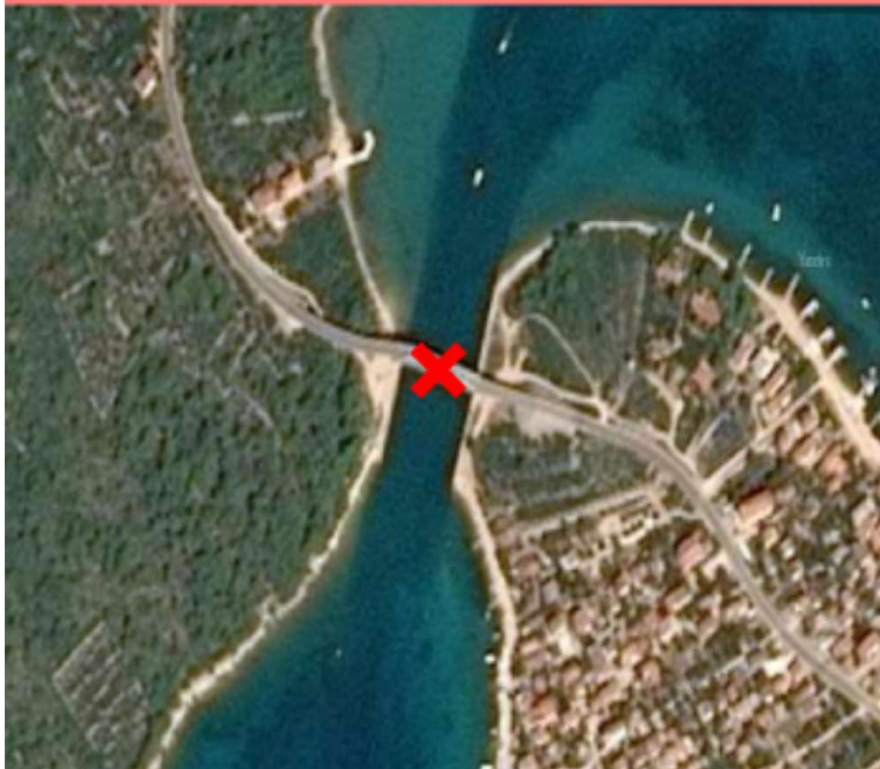
**Dipstick for checking the engine oil. Always check the oil level before leaving the marina.**

**Engine generator belt. Always check its condition before leaving the marina.**

# Route Warning



The Ždrelac Bridge which connects the islands Ugljan and Pašman is only 16,5 meters high. Sailing yachts with upright mast cannot pass the strait.





**SEA HELP – VIKTORIA  
ORLIC**  
**Tel. +385 919 112 112 or**  
**Tel. 0800 112 00 112**  
**VHF 16**



**Single number for emergency  
response services:  
112 – Emergency operations  
service**

**Main emergency phone numbers:**  
**192 – Police**  
**193 – Fire Service**  
**194 – Emergency medical service**  
**195 – Rescue on the water**

**In case of any emergency or emergency situation contact the charter  
company!**

# In Case of Accidents

- 1) If you crashed when entering or leaving the marina, you must call the captain (channel 16). Get the contacts of those you crashed into. Be sure to stay where you are. Do not leave under any circumstances! Try to solve the problem on the spot. Make sure to sign a receipt.
- 2) If you are hit while entering or leaving the marina, you must call the captain (channel 16). Get the contacts of those who crashed. Be sure to stay where you are. Do not leave under any circumstances! Try to solve the problem on the spot. Make sure to sign a receipt. Write down the number and the name of the yacht and the name of the charter company. Go to the marina administration.
- 3) If you are hit outside the marina, you must call the police or the captain (channel 16). Assess the damage. Look for eye witnesses. Find out the number and name of the yacht and the name of the charter company.
- 4) If you crash into someone else's boat outside the marina, you must stay and call the captain (channel 16). Assess the damage. Try to sort it out on the spot. Be sure to sign a receipt.
- 5) If you run aground (on sand), you need to try to get the boat afloat by mounting a rope on the mast top (or using the spinnaker halyard) and pulling the boat aside with the dinghy. If you cannot leave on your own, call the charter company and ask for help.
- 6) If you hit a rock/stone, you must call the captain (channel 16) and the charter company.
- 7) In case of serious breakdowns, such as mast fall or fire you must contact the charter company ask for help with transportation. Call SeaHelp.
- 8) In case of medium breakdowns, such as engine failure, torn sail, lost anchor etc., you need to call the charter company.
- 9) In particularly serious cases, such as death of a person or serious injuries, it is necessary to call the emergency services (channel 16) and say 3 times „Mayday“. Also call the police.
- 10) Pollution of the sea: if the yacht sinks and there is a fuel spill, you must call the captain's office. Try to close the fuel valve.
- 11) If you do not make it in time to check out, you need to call the charter company and warn them about your delay.



## **PULA**

Riva 18, 52100 Pula

Harbor master: Dolores Brenko Škerjanc, Tel. +385 52 535877

Head of department: +385 52 535881

Maritime traffic 0-24h +385 52 535870

[pula.pomorskipromet@pomorstvo.hr](mailto:pula.pomorskipromet@pomorstvo.hr)

## **RIJEKA**

Senjsko pristanište 3, 51000 Rijeka

Harbor master: Darko Glažar, Tel. 385 51 211422

Head of department: Vladimir Malnar, Tel. +385 51 212474

Maritime traffic 0-24h, head of department: Edo Kovačević, Tel. +385 51214031

[rijeka.pomorskipromet@pomorstvo.hr](mailto:rijeka.pomorskipromet@pomorstvo.hr)

## **SENJ**

Obala kralja Zvonimira 12, 53270 Senj

Harbor master: Nenad Bugarin, Tel. +385 53 881301

Inspector: Neven Tomljenović, Tel. +385 53 881301

Maritime traffic 0-24h, head of department: Danijel Vrzić, Tel. +385 53 881301

[senj.pomorskipromet@pomorstvo.hr](mailto:senj.pomorskipromet@pomorstvo.hr)

## **ZADAR**

Liburnska obala 8, 23000 Zadar

Harbor master: Alen Rukavina, Tel. +385 23 254888

Inspector: Boris Medić, Tel. +385 23 254886

Maritime traffic 0-24h, head of department: Denis Livljanić, Tel. +385 23 254880

[zadar.pomorskipromet@pomorstvo.hr](mailto:zadar.pomorskipromet@pomorstvo.hr)

## **ŠIBENIK**

Obala Franje Tuđmana 8, 22000 Šibenik

Harbor master: Robert Baljkas, Tel. +385 22 217217

Inspector: Perošlav Kronja, Tel. +385 22 217217

Maritime traffic 0-24h, head of department: Tel. +385 22 217217

[sibenik.pomorskipromet@pomorstvo.hr](mailto:sibenik.pomorskipromet@pomorstvo.hr)

## **SPLIT**

Obala Lazareta 1, p.p. 317, 21000 Split

Harbor master: Željko Kuštera, Tel. +385 21 302400

Inspector: Ivan Paušić, Tel. +385 21 302409

Maritime traffic 0-24h, head of department: Ivica Vuletić Tel. +385 21 362436

[split.pomorskipromet@pomorstvo.hr](mailto:split.pomorskipromet@pomorstvo.hr)

## **PLOČE**

**Trg kralja Tomislava 24, 20340 Ploče**

**Harbor master: Joško Nikolić, Tel. +385 20 679008**

**Inspector: Toni Grgić, Tel. +385 20 670506**

**Maritime traffic 0-24h, head of department: Dubravko Paskojević,  
Tel. +385 20 679008**

**[ploce.pomorskipromet@pomorstvo.hr](mailto:ploce.pomorskipromet@pomorstvo.hr)**

## **DUBROVNIK**

**Vukovarska 16, 20000 Dubrovnik**

**Harbor master: Mato Kekez, Tel. 385 20 418988**

**Head of department: Igor Jadrušić, Tel. +385 20 418984**

**Maritime traffic 0-24h, head of department: Zvonimir Cetinić,  
Tel. +385 20 418989**

**[dubrovnik.pomorskipromet@pomorstvo.hr](mailto:dubrovnik.pomorskipromet@pomorstvo.hr)**